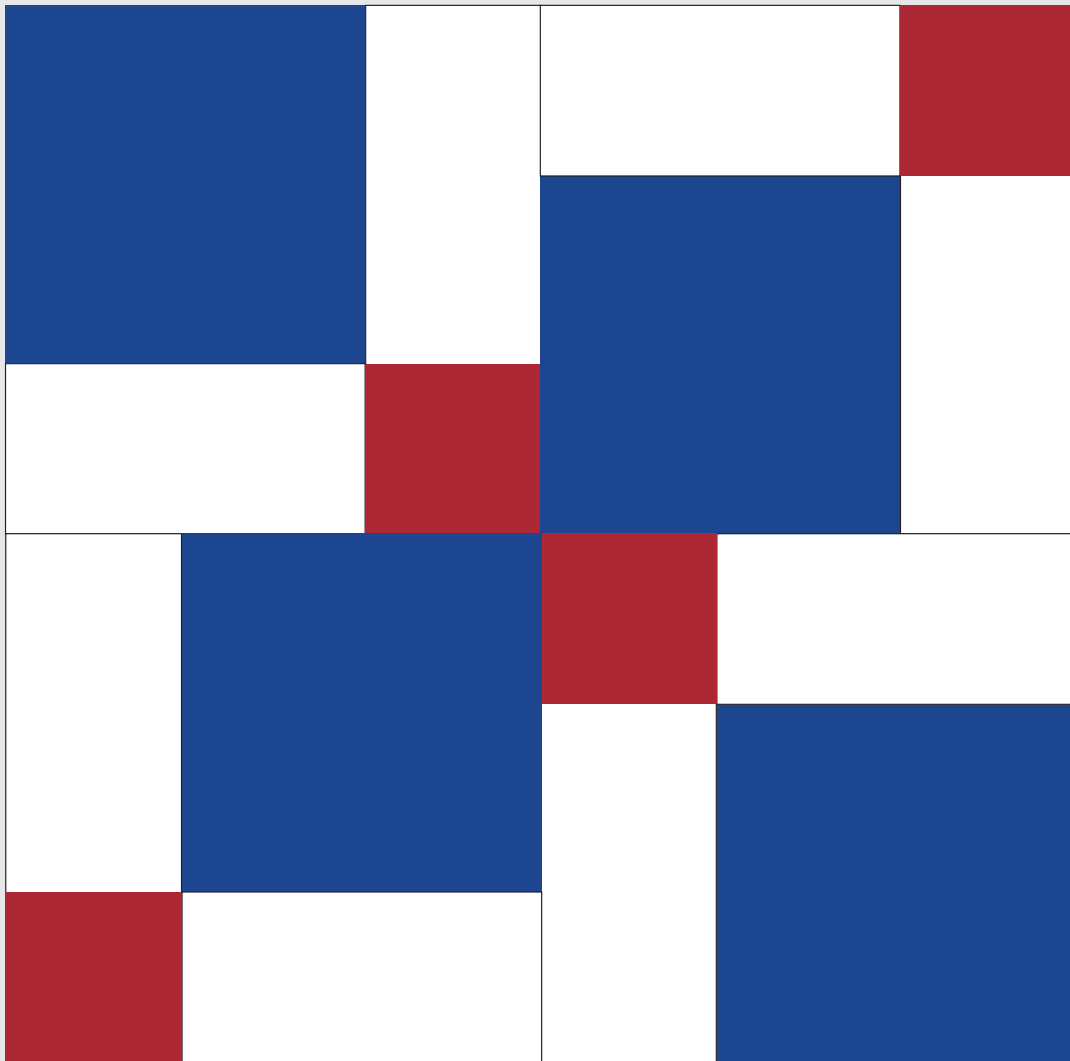


the COLOURBLIND  
QUILTER

# Block #6 Disappearing Nine Patch



[www.thecolourblindquilter.com](http://www.thecolourblindquilter.com)



[hello@thecolourblindquilter.com](mailto:hello@thecolourblindquilter.com)



[@thecolourblindquilter.com](https://www.instagram.com/thecolourblindquilter)



[www.fb.com/thecolourblindquilter](https://www.facebook.com/thecolourblindquilter)

Copyright © 2021 The Colour Blind Quilter All rights reserved.



## Information

[QR code to come]



This QR code will take you to the video, just scan it with your camera.

In this worksheet you will find all the information and fabric requirements you need to make a Disappearing Nine Patch block.

If you need to get the fabric requirements and information for the whole series, you can find everything you need on my website:

<https://www.thecolourblindquilter.com/btb-season1>

From the fabric you have cut, you will need:

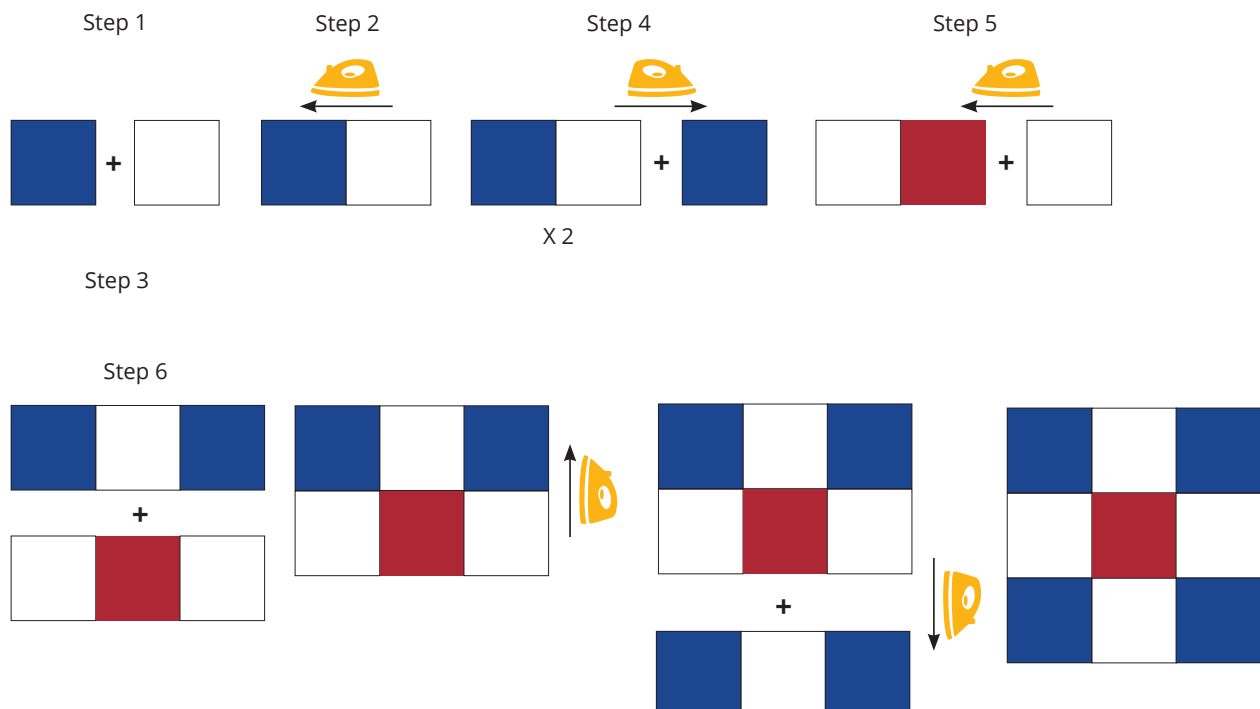
Fabric Requirements		
FABRIC		FABRIC PIECES
<b>A</b>	RED	(1) 4 ¾" square
<b>B</b>	BLUE	(4) 4 ¾" squares
<b>BG</b>	WHITE	(4) 4 ¾" squares

This begins with making a simple nine patch. Watch my nine patch for a quick refresher.



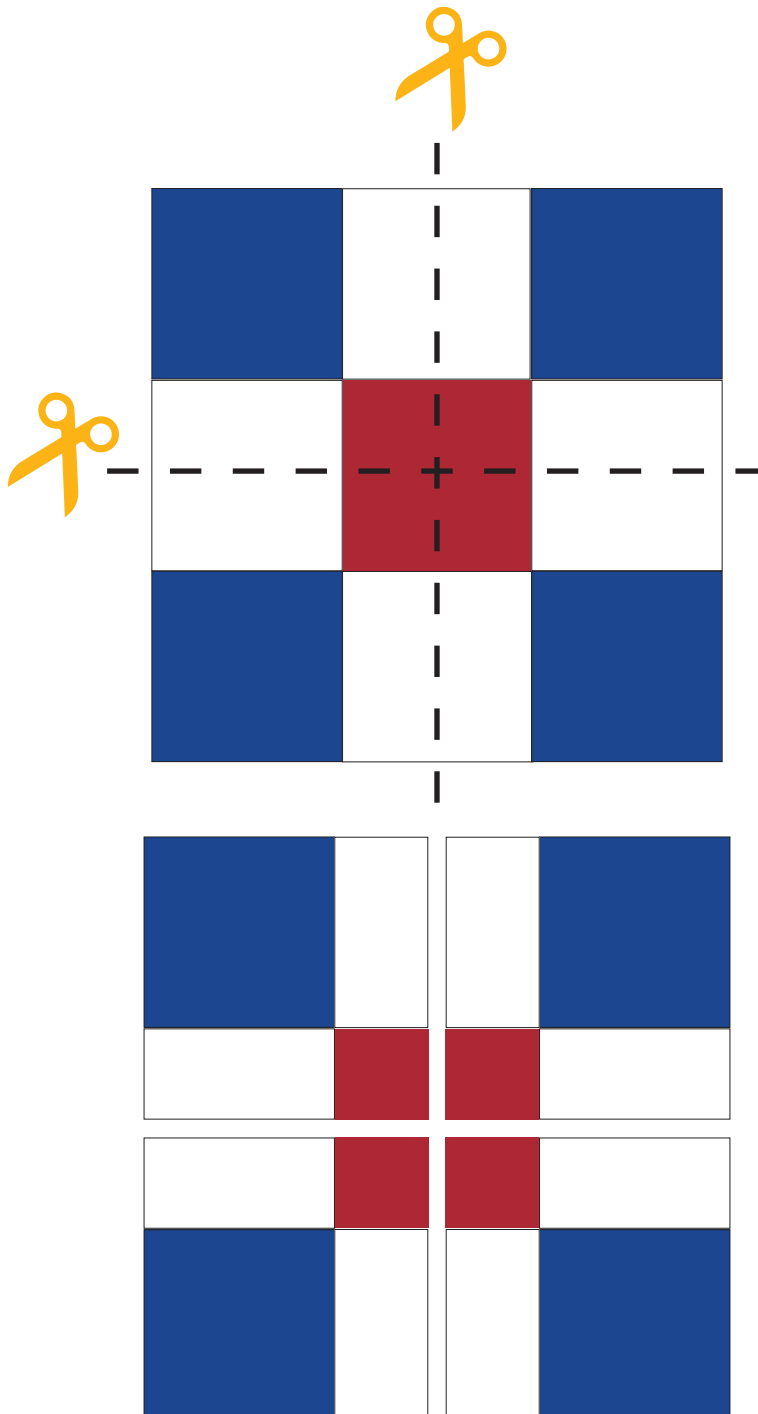
# Instructions

- 1** Begin by making the nine patch. Note the red square is in the centre of the block:
- Sew a Fabric B square to a background square.
  - Press the seams to the blue fabric.
  - Repeat steps 1 and 2 to make a two more sets – making sure that one set is with a fabric A square.
  - Take the fabric B sets and sew a Fabric B square to the right of a background fabric. Press seams to the blue fabric.
  - Take the third set and sew a Background square to the right of the red square. Press the seams to the red fabric.
  - Arrange the rows in order and sew row 1 and 2 together, taking care to make sure the seams nest. This ensures the centre points will match. Press the seams to the top row.
  - Sew the third row to the bottom of the second row, ensuring the seams nest. Press the seams towards the bottom row.



## Instructions

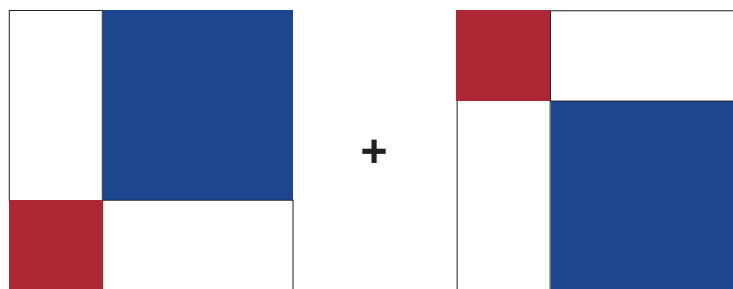
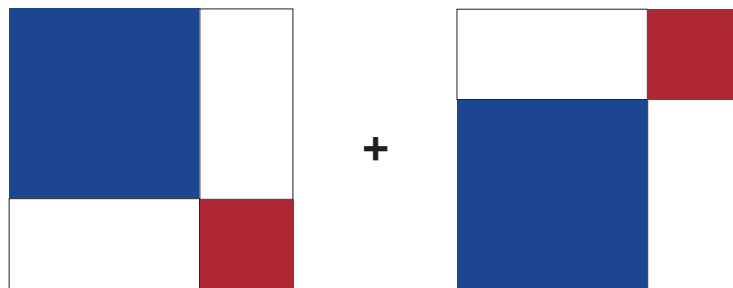
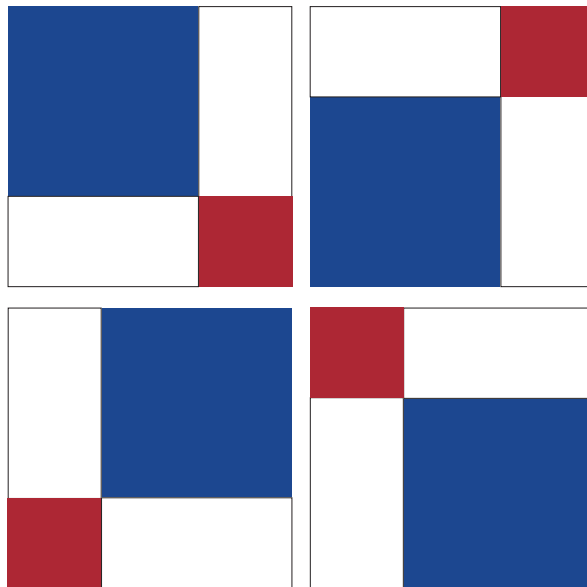
- 2 Measure the width of the middle square, your square should measure  $4 \frac{1}{4}$ ". We will be making a cut halfway through this square. Measure  $2 \frac{1}{8}$ " from the left long seam and make a vertical cut. Now rotate the block 90 degrees and cut the nine patch in the other direction. Don't move the fabric, move the ruler or the cutting mat. Again, measure from the long seam and make a cut.



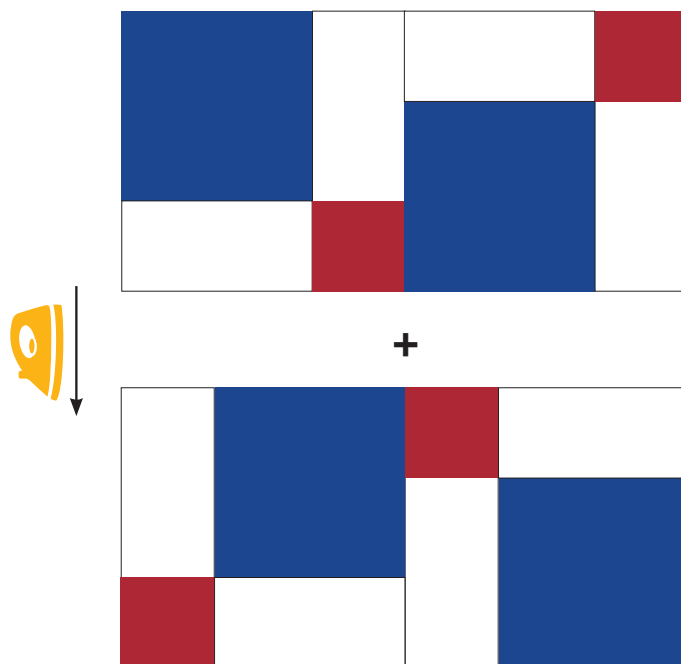
# Instructions

3

Now arrange your blocks as per the diagram and sew it back together. Press the top row seams to the right, and the bottom row seams to the left. Make sure the seams nest in the centre when joining the two rows and press your seams to the bottom of the block.

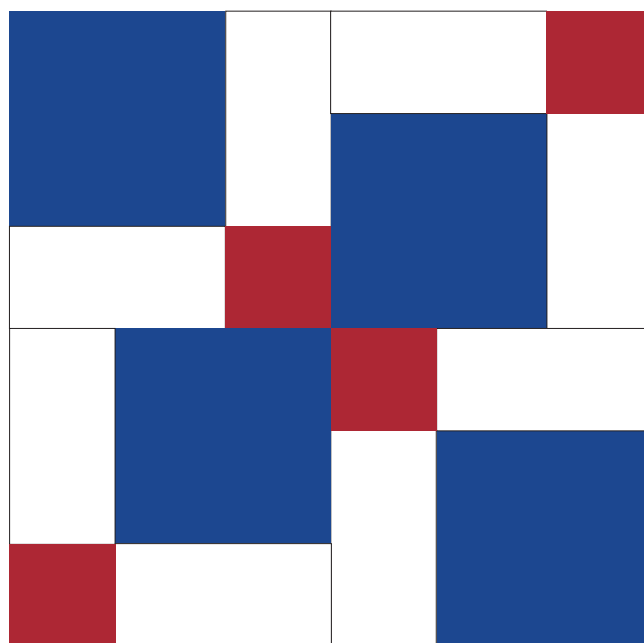


## Instructions



4

The block is slightly larger than we needed to avoid cutting difficult sizes, so we will trim this block to  $12 \frac{1}{2}$ ". You will be removing  $\frac{1}{8}$ " from each side of the block. Please see the video for detailed instructions on squaring up your block.



## Alternative Block Sizes

To make this block in other sizes you can use the following table. The instructions are the same regardless of what size you make. The size to square up to is included.

Fabric Requirements				
FABRIC		6" Finished	9" Finished	15" Finished
<b>A</b>	RED	(4) 2 ¾" squares	(4) 3 ¾" squares	(4) 5 ¾" squares
<b>B</b>	BLUE	(4) 2 ¾" squares	(4) 3 ¾" squares	(4) 5 ¾" squares
BACKGROUND		(1) 2 ¾" square	(1) 3 ¾" squares	(1) 5 ¾" square
SQUARE UP		6 ½"	9 ½"	15 ½"

Make sure you follow the playlist on **YouTube** so you can get all the videos in this season. Share your blocks on Instagram using the hashtag **#BTBSeason1** and tag **@thecolourblindquilter** in your posts so I can see how you're getting on!



Here is a blank block for you to try out your colour combinations.

